

# Fox Blocks Spray Foam Adhesive



TECHNICAL BULLETIN . PRODUCTS AND ACCESSORIES

1.01.18

## FOX BLOCKS SPRAY FOAM ADHESIVE

Fox Blocks has developed a single component spray foam specially formulated for use with Fox Blocks ICFs. Fox Blocks Spray Foam is a single component, moisture-curing, and self-expanding aerosol polyurethane foam. It is designed for easy dispensing with a commercial gun application (universal applicator gun sold separately).

Fox Blocks Spray Foam is a low expansion adhesive and acoustic insulation that is waterproof, mold resistance, and paintable.

Fox Blocks Spray Foam is recommended for ICF installers, specifically to adhere EPS foam to itself as well as to wood and concrete. The foam may also be used to fill and seal gaps or penetrations in the wall with no thermal loss within the void. When applied at the same thickness of the Fox Blocks EPS, no thermal loss will occur within the void or wall assembly, such as R-Value, also maintaining air infiltration, and moisture resistance characteristics.

## APPLICATION

The optimal Fox Blocks Spray Foam container temperature is 65°F (18°C). Application temperatures are between 29°F and 86°F (-1.6°C and 30°C).

Shake can vigorously for a minimum of 60 seconds. Screw applicator gun to top of spray can, and adjust the flow screw setting appropriately.

Hold the gun with the can on top, point nozzle away from any person, and squeeze trigger lightly. Moisturizing the surface with a spray bottle improves foam adhesion and shortens curing time.

Test the Spray Foam to understand the low expansion rate, too much foam expansion may cause movement of the blocks.



24 oz. Can

Fox Blocks does NOT require the forms to be glued together horizontally or vertically.



For efficiency, the use of a spray foam gun attachment. Foam gun is available for order with Fox Spray Foam.

### Fox Spray Foam and Accessories

12 Cans Per Box

1 Foam Gun

1 Spray Foam Cleaner

## Uses For Blocks Spray Foam

- Spot adhesion of first course of blocks to a concrete footing or slab. When using spray foam to adhere forms to footing or slab, spray 1" spots of foam under the block at 8" on center on both sides of the form. Do this only after two courses of forms have been completed, leveled and aligned.
- To adhere all field cut blocks horizontally or vertically
- Fill joint in standing vertical seams
- Seal around window and door openings, Fox Buck, and other buck materials
- Seal service and utility penetration openings through the wall
- Repair broken block or damaged EPS

## Clean-Up

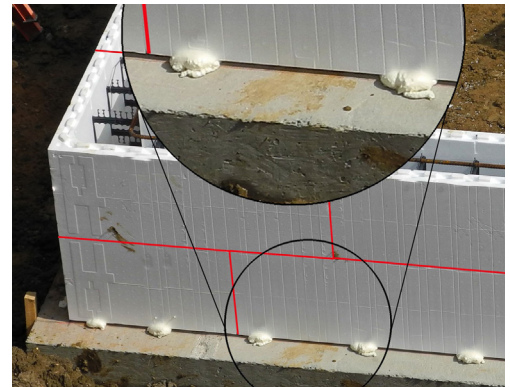
Fresh foam can be cleaned by using the Fox Foam Cleaner. May also use of acetone or paint thinner. Cured foam can be cleaned mechanically.

## Safety

- Remove any source of ignition near application or until foam is tack free
- Wear suitable protective clothing and gloves. Use only in well-ventilated areas.
- Contains Diphenylmethane-4, 4-Diisocyanate
- Harmful by inhalation. Irritates eyes, respiratory system, and skin. Do not breathe spray/vapor.
- Wear suitable protective clothing and gloves. Use only in well-ventilated areas.
- Pressurized container, keep away from direct sunlight and do not expose to temperatures over 110°F (43°C)
- Do not pierce or burn can, even after use
- Keep away from sources of ignition, including smoking
- Keep out of reach of children

## Restrictions

- Storage above 75°F and below 38°F (24°C and 4°C) may shorten shelf life
- Store and transport in a vertical position
- Keep at room temperature for 12 hours before application
- Cured foam may discolor if exposed on the exterior to ultraviolet light
- If exposed for a long time, paint or coat the foam for the best results in outdoor applications.



Do not allow spray foam to expand into concrete core.

For best results use foam by the date listed on the bottom of the can.

## Standards

Fox Spray Foam meets or exceeds the requirements of the following specifications:

Class A+

UL Listed

Conforms to fire class B3 according to DIN 4102-1

VOC according to ASTM D2369-10

Meets the requirements of VOC content specifications in LEED credit EQc4.1 "Low-emitting products" of SCAQMD Rule 1168

Fox Spray Foam does not contain any propellant gases that are harmful to the ozone layer