

# T-Block

Sure you can build T walls with a couple of straight block and some tie wire, but if you want to lower your man hour rate, you need the **Fox Blocks T-Block**.

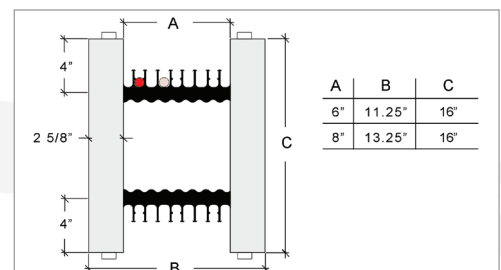
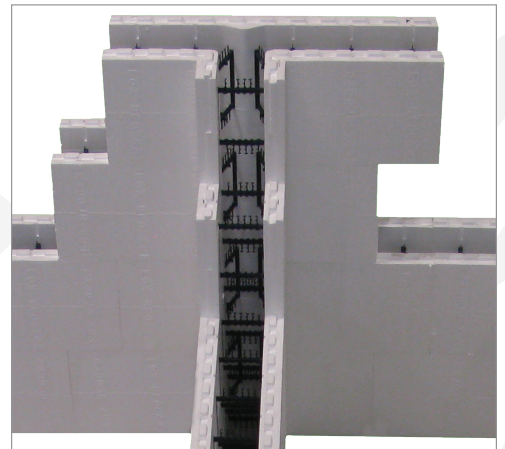
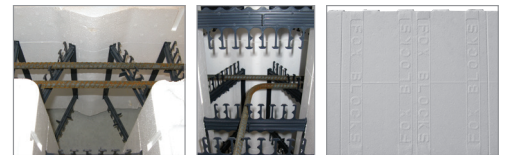
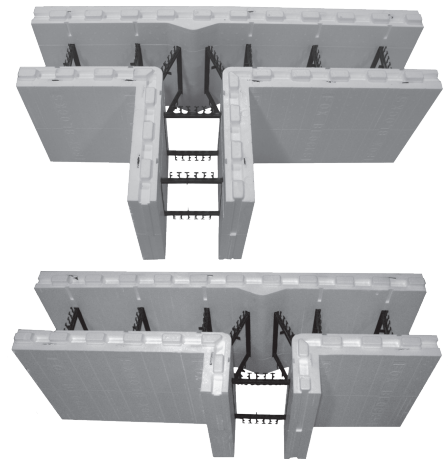
When contractors said they needed a T-Block, Fox Blocks delivered with one that is easy to use and incredibly strong.

## FOX BLOCK T-BLOCK FEATURES:

- 1) The T-Blocks are available in 6" and 8" concrete cores.
- 2) Six T-Blocks per bundle (3 short and 3 long)
- 3) Two ties\* are used at the intersection of the "T" to give maximum strength and attachment. These ties are placed in such a way as to allow proper rebar placement and ultimate form strength.  
*\* Ties are the black recycled polypropylene members that give the block strength and provide rebar positioning.*
- 4) Like all Fox Blocks, blocks are reversible which gives you double the options with just one block. You can choose to have the T section on the right or left of center simply by flipping the block over.
- 5) Foam thickness is 2.625" on all blocks.
- 6) Ties allow proper rebar lap splices, for maximum flowability during concrete placement and consolidation.
- 7) Ties are clearly marked in EPS for attachments.
- 8) Tie flanges are 1.5" wide and full height for ease of attachment.
- 9) Ties touch vertically when stacked eliminating form settlement.
- 10) The T-Block will give you 8" of overlap most directions.

## 8" T-BLOCK INSTALLATION

The unique manufacturing challenges were overcome for the 8" T-Block by establishing a 4" offset. This off-set results in rows of ties staggered by 4" if placed with factory ends against each other. The easy fix to properly line up ties is to install the T-Block and create a stacked joint at the butt end of the long T leg. Strap stack joint prior to concrete placement.



### Outside Dimensions Are:

6" T - Block Short = 44"	x	4.375"
6" T - Block Long = 44"	x	12.375"
8" T - Block Short = 44"	x	4.75"
8" T - Block Long = 44"	x	8.75"

# T-Block

